



## Q-Cover™

Revealing a better way

## Universal Blank Cover Assembly

### Part Numbers

#### Assembled:

Q-Cover with JBA..... QCU100

#### Parts:

Universal Junction Box Adapter..... QJBA

Q-Cover ..... QC100

### Application:

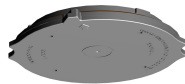
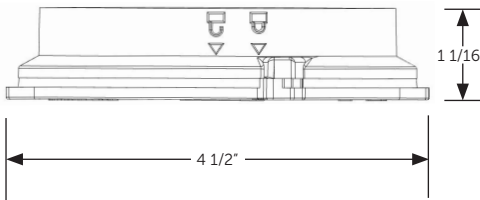
The Q-Cover can be assembled with our QJBA to create a quick way to cover an unused light or provide a water proof cover for existing junction boxes. Also used to connect 3rd party luminaires and other devices to our Q-Hub. Includes mounting holes for 3.5" and 3" devices for a #8 coarse thread screw.

### Features:

- No assembly screws
- FicientLock™ System
- 3rd party device mounting holes
- (4) #8 coarse thread plastite screws included

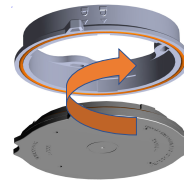
## FicientLock™ Technology

QCU100

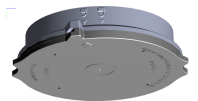


Q-Cover  
#QC100

#QJBA



Universal Junction  
Box Adapter



Q-Cover with JBA  
#QCU100

"Twist, Lock, and It's Water Tight!"

Material ..... Non-metallic, high performance polycarbonate, and high temp rated gasket

Environmental ..... Certified for wet location

Dimensions ..... 1 1/16" H X 4 1/2" W

Packaging ..... QCU100: 15 per box; Box Size: 16"x11.25"x5.19"; Weight: 5 lbs

Mounting ..... Ceiling, wall, or surface mount. Ships with two different style of screws for easy installation



Scan QR code for more info



Recyclable materials



Indoor/  
outdoor use



USA Made